



Remote Valuation

Mobile surveying solution for
the completion of off-site
Mortgage Valuation Reports

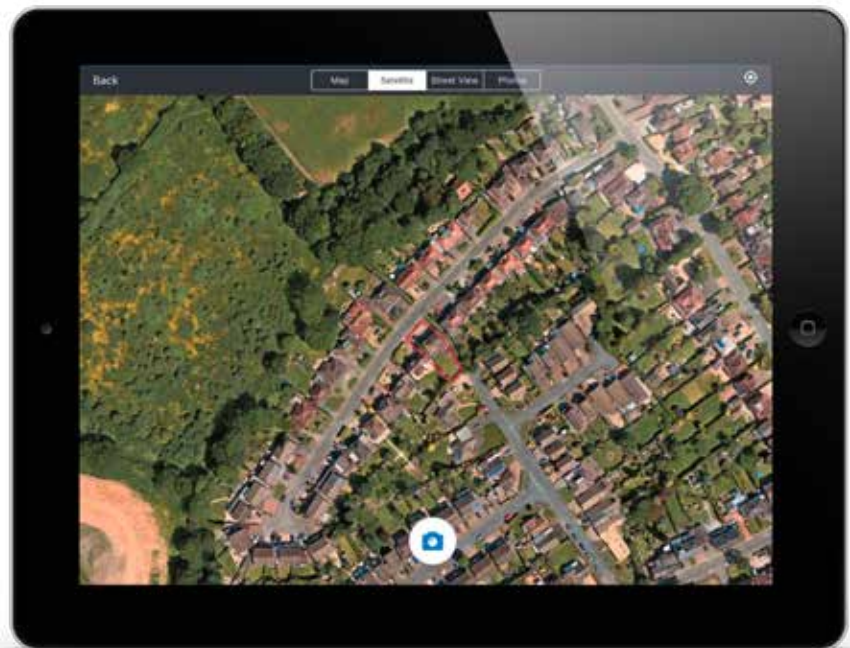


Our mobile software provides surveyors with an alternative tool for completing Mortgage Valuation Reports, combining the use of data and the expertise of a local surveyor.

Our solution offers a method of valuation for properties that don't necessarily require a full physical inspection, optimising the gap between Automated Valuation Models and drive-by external inspections.

The Remote Valuation App utilises the knowledge and expertise of a local surveyor, combined with access to Land Registry and Google Maps to identify the property location and boundary title. Integration with third-party property data sources, removes the need to be physically on-site during a valuation.

This solution offers the balance of speed, cost and accuracy, with greater certainty than using AVMs in isolation, while keeping costs low compared to full physical inspections.



Features

- Easy to use interface including overview screen, detailing property information and clear survey sections.
- Integration with Land Registry and Google Maps to identify location and download subject property boundary title.
- Satellite imagery, road maps and street views available.
- Integrated access to property data from Rightmove and CoreLogic.*
- Incorporated BCIS calculator (The Building Cost Information Service) to calculate total reinstatement costs, including additional costs.
- Photo capture tool enabling evidence collected within the App, to be easily screenshot, stored and used within the site notes.
- Output automatically formatted into a lender specific mortgage valuation report with the accompanying site notes.
- Documentation and site notes are stored online to provide an electronic audit trail and support the defence of claims.
- On completion, two outputs are created automatically – the completed lender specific MVR along with the electronic surveyor site-notes.
- Documentation and site notes are stored online to provide an electronic audit trail to support the defence of claims.

*Functionality available if integrated with Survey Hub.

How it works



The remote valuation forms part of a mortgage valuation and an instruction is received from Survey Hub or initiated on the App.



Surveyor is presented with a job overview screen, with quick links to each section in the survey.



Surveyor uses integrated Land Registry and Google Maps data to create the property title outline, with access to satellite and street views.



Surveyor can utilise integrated comparable data sources to support the property valuation analysis.*



Surveyor can capture evidence electronically using screenshots which are stored for later use in site notes.



Once the remote valuation data capture is submitted, the surveyor completes the remaining mortgage valuation.

The data is populated onto the lender's own form and submitted directly to Survey Hub or emailed to the Surveyor and electronically.

About us

CoreLogic UK empowers the Property Services Industry through Technology, Data and Connectivity.

The markets we serve include mortgage finance, property surveying, residential estate agency, insurance and energy.

Our solutions help clients to streamline operations, improve performance, make smarter decisions and mitigate risk.

We deliver value and work collaboratively with our clients, by listening to their needs. We address challenges and act quickly to present innovative and cost-effective technological and data driven solutions.

29.7 | million UK residential properties monitored daily for events

150 | million UK property transactions stored in our database

20+ | years of historic sales, listings and valuation data

80% | of all UK property valuations instructed using our technology

For more information please call 0333 123 1415 or email salesuk@corelogic.com

2020/01

[corelogic.uk](https://www.corelogic.uk)

© 2020 CoreLogic UK, a UK private limited company, a subsidiary of CoreLogic, Inc.
All rights reserved. CORELOGIC and the CoreLogic logo are UK trademarks of CoreLogic, Inc. and/or its subsidiaries.



CoreLogic®